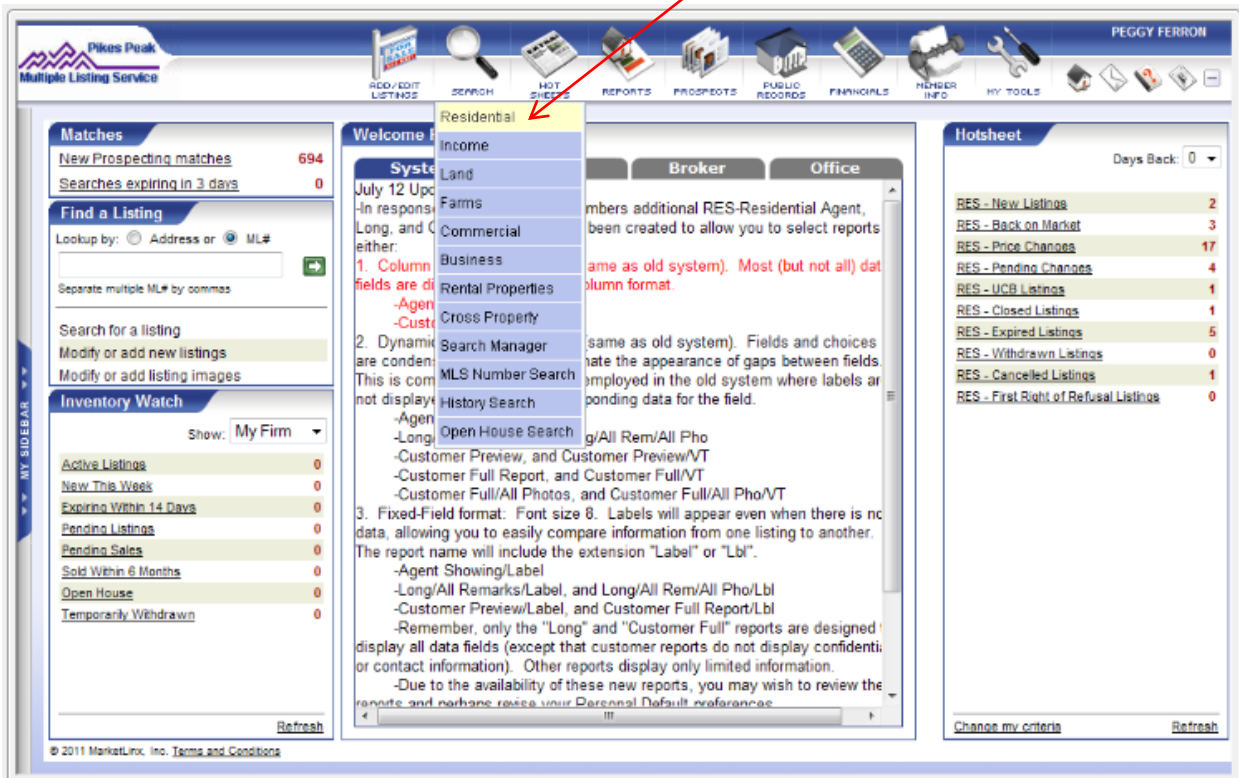


How to Set My View – Map Search

If you need to know how to use Mapping in Tempo5 to add shapes - circles, polygons or rectangles – drawn on a map to include in your search criteria, that is covered in a separate tutorial entitled **How to Use Tempo5 Mapping**. This short tutorial will cover how to set a default for the map view rather than having to zoom it in every time you access the map.

In Tempo5, to access the map, mouse over the Search icon at the top of the screen and click on a property category.

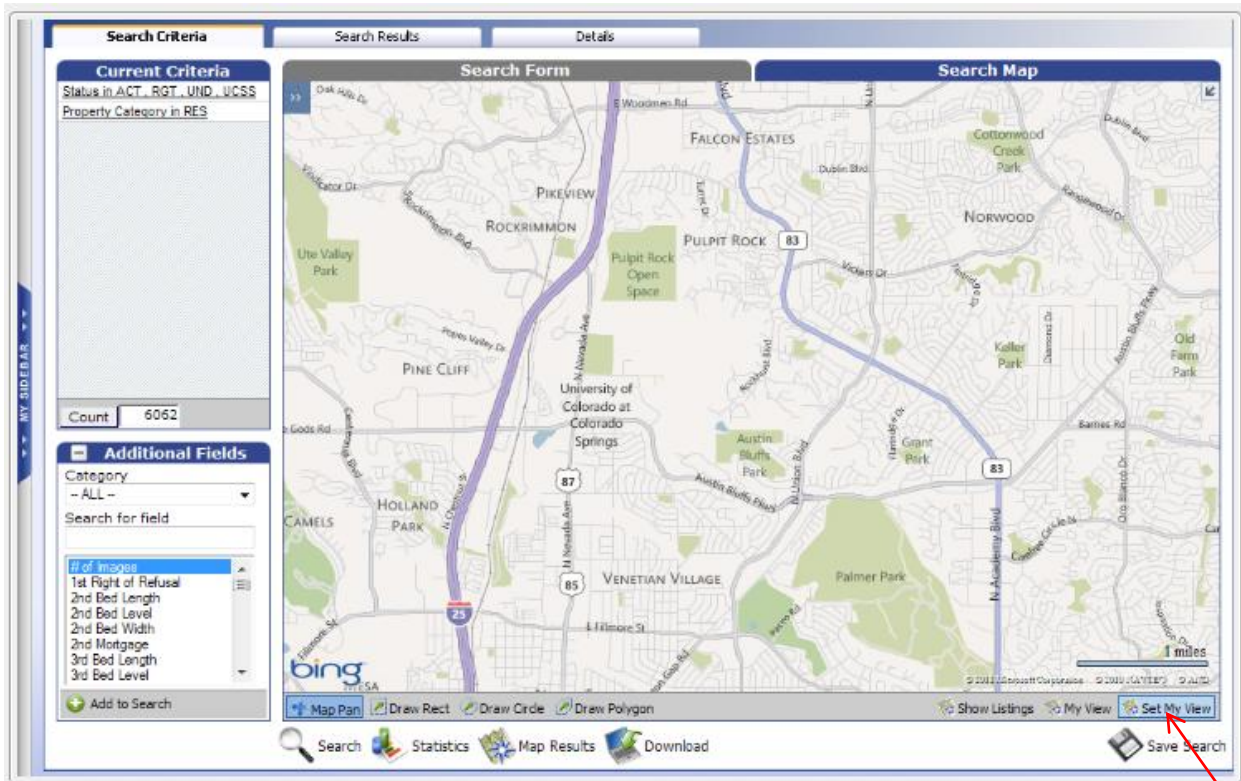


On the Search Criteria screen, on the secondary tab row to the right of the Search Form tab, click on the Search Map tab.

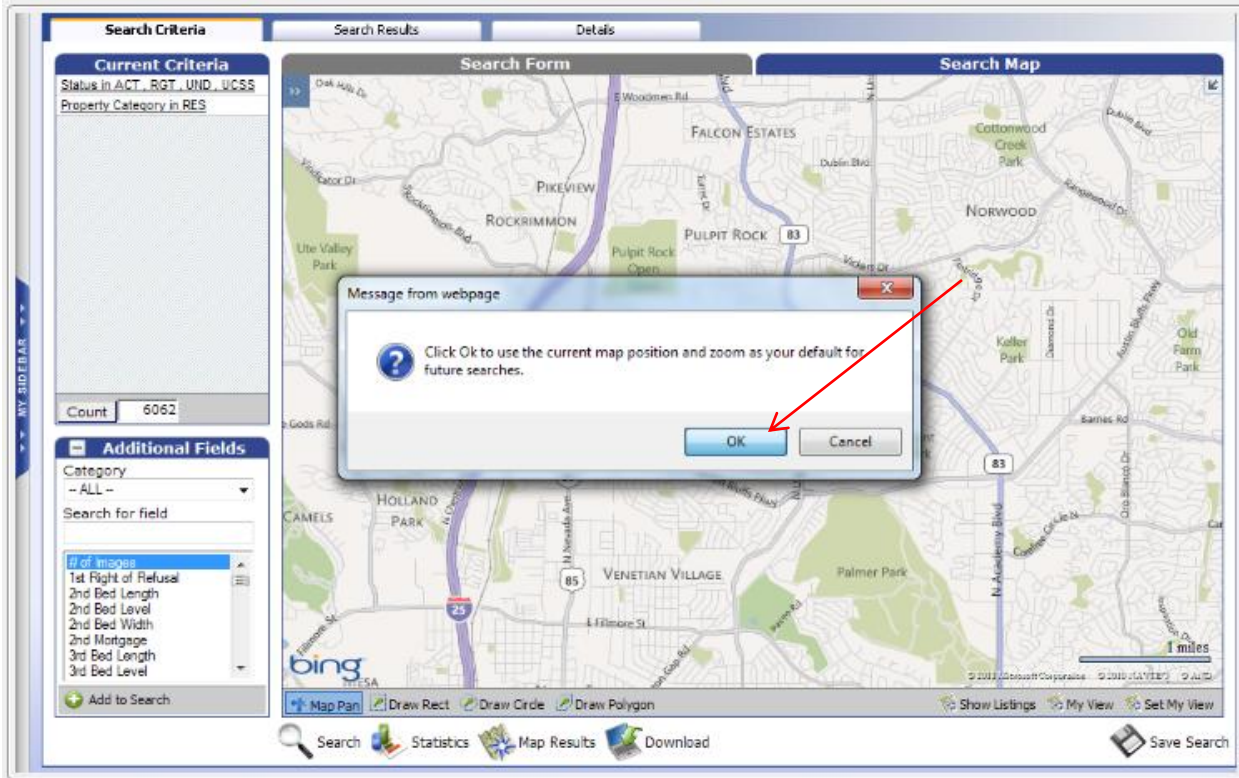
If there is a particular area that you usually draw shapes in or you just want the map always zoomed in to El Paso and Teller Counties, it is easy to set the map to automatically display your selected area each time you click on the Search Map tab. This tutorial will show you how to set a default view for the map so that it isn't necessary to zoom in the map every time you access it.

First, zoom the map to the area you want to display as your default area. There are several ways to zoom the map – use a mouse with a wheel on it, rolling the wheel up or down, click on the controls on the blue bar in the upper left corner of the map or use the locator option on the blue bar to search for a specific location. The detailed instructions for zooming and repositioning the map are also covered in the How To Use Tempo5 Mapping tutorial.

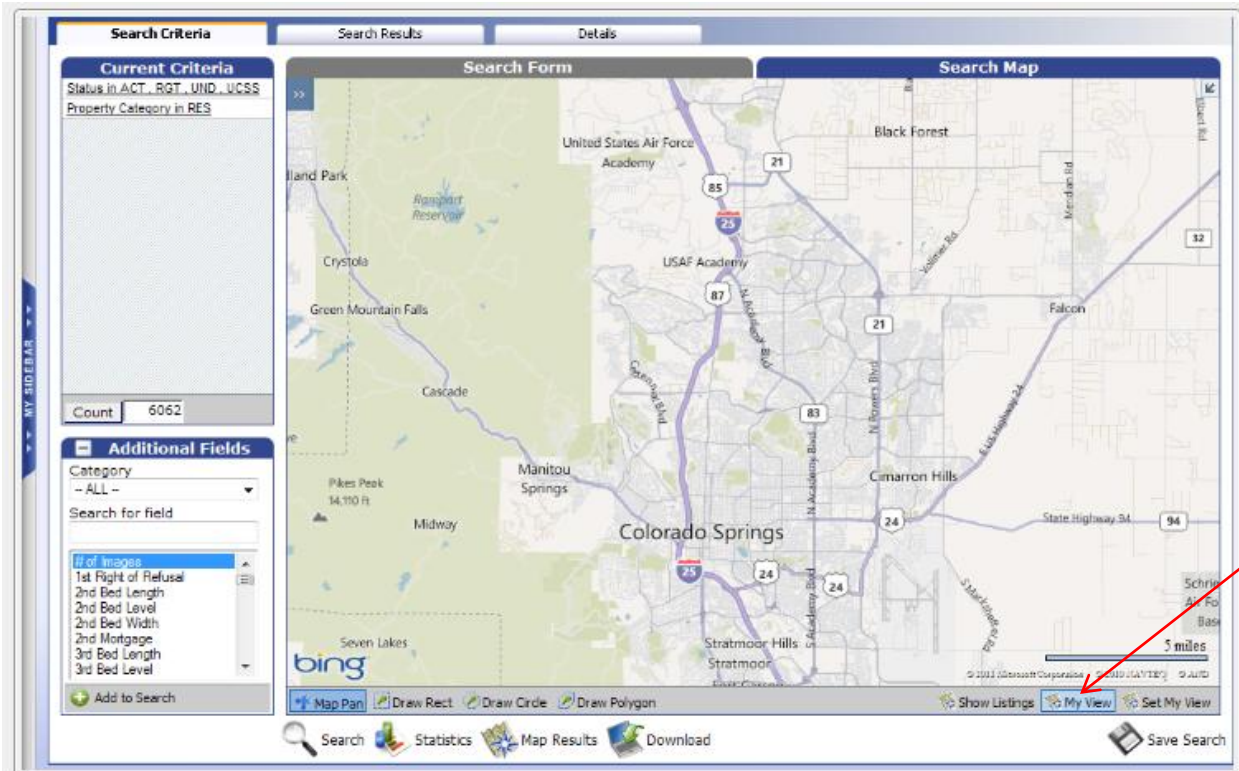
When the map is displaying the area you want to set as your default, click on Set My View in the gray bar at the bottom right of the map.



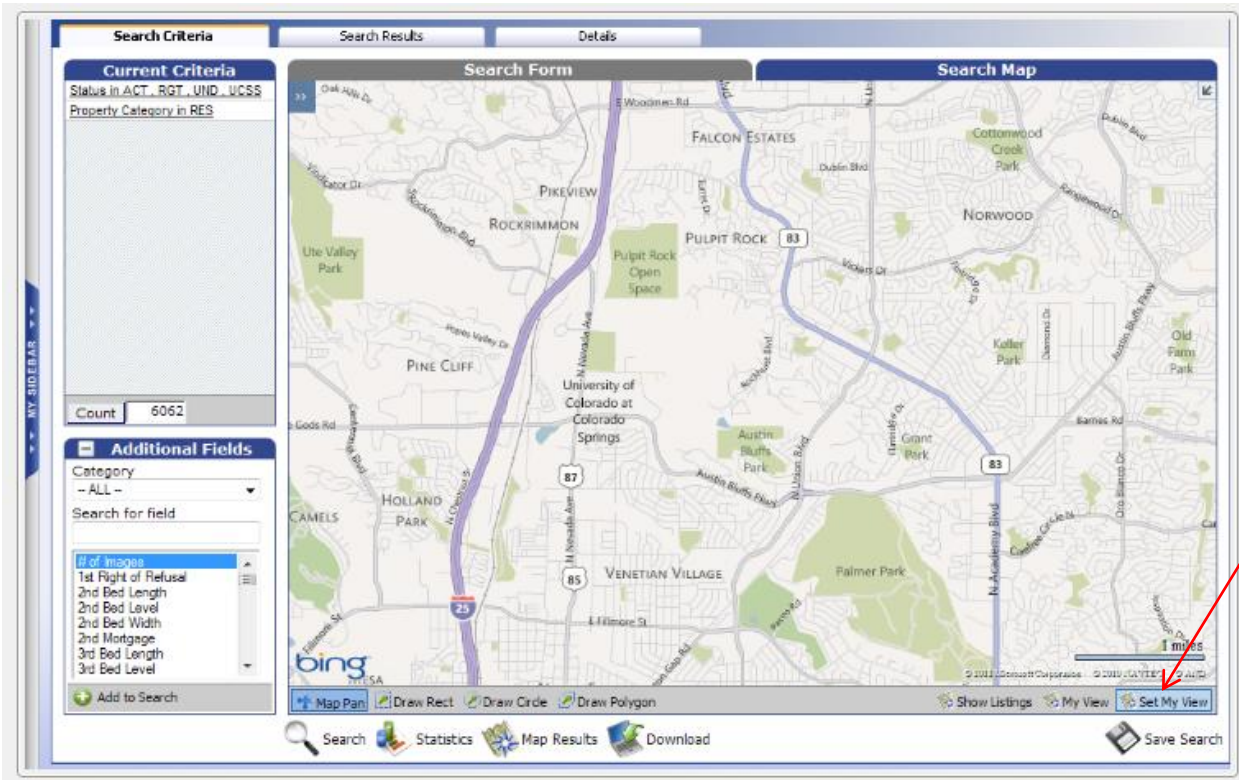
Click OK to set this view. Each time you click on the Search Map tab from this point on, it will always display the view of the map that you set as your view.



When you are on your view of the map, you can still zoom the map in and out and move it around. To return to your default view at any time, click on My View on the gray bar at the bottom of the map.



If you want to reset your default view, position the map and click on Set My View again.



Hopefully this makes it easier to use the map without the need to reposition it every time you access the Search Map tab.

If you have questions, please contact RSC at 719 635-5040, Monday-Friday, 8am-5pm.