

TEMPO™ 5.0

How to Configure Your PC for Tempo5

System Requirements

Tempo5 requires more from your computer than our previous version. We are certainly not telling you that you should buy a new computer, but are just making you aware of the upgrade in hardware requirements. Having an older computer just means that Tempo5 will run slower.

The minimum system requirements are:

- **Browser** must be Microsoft® Internet Explorer versions 7 or 8.
Since Internet Explorer 9 was only recently released and is being tested by Marketlinx, it is not approved for use with Tempo5 at this time.
- **Operating System** can be Windows XP with SP2, Windows Vista or Windows 7.
- Minimum screen resolution is 1024x768.
 - This presents a problem for users of the small netbooks since they do not support that resolution. If the screen on a netbook is at 100%, only a portion of the Tempo5 screen will show. There is no way to scroll to see the rest of the screen. We found that if the screen is sized to 75%, the entire screen will show – small but it will show.
- A high speed broadband internet connection is highly recommended.

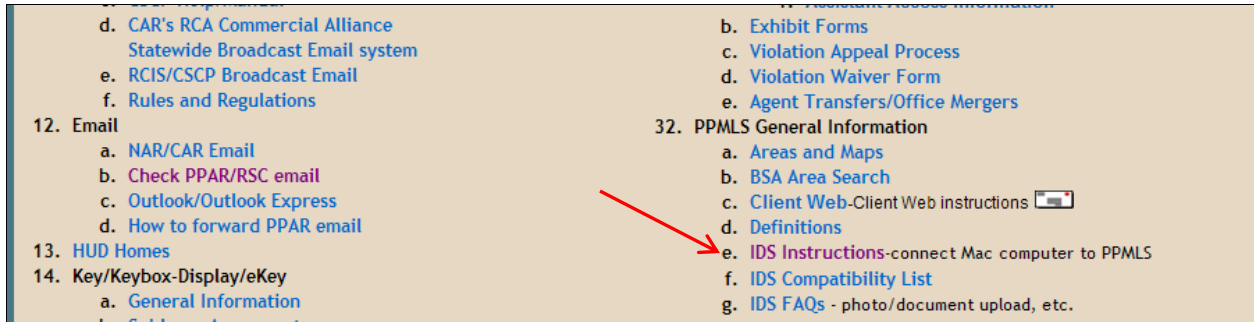
In order for Tempo5 to operate with all the performance, security and functionality possible, there are certain steps that must be taken on each PC that will be used to access Tempo5.

If you are using a Mac computer and the IDS software to access PPMLS, there is nothing that has to be configured on a MAC. If you have a Mac computer but have not downloaded the IDS software, go to the RSC website – www.pikespeakrsc.com – and click on RSC Links.

Pikes Peak REALTOR® Services Corporation
A subsidiary of the Pikes Peak Association of REALTORS®
"keeping REALTORS® in the center of the real estate transaction"

For Participants	PPMLS Login	Quick Links
Agent Console Builder Inventory PPMLS Anywhere CSCP Assessors County Records Index SupraWEB Check/Forward PPAR Email My PPAR Account (Ecommerce) RSC Links Statistics (historical) Online Technical Support	Login ID: <input type="text"/> Password: <input type="password"/> <input type="button" value="Login"/> PPMLS Announcements 2/1/2011 PPMLS RULES REVISED TO COMPLY WITH CP-36 Pursuant to the DORA Position Statement CP-36 the RSC Board of Directors has revised the PPMLS Rules and Regulations to eliminate the "Entry Only" Service Level choice. Please see the changes noted below. Section 1.2.1. LIMITED SERVICE LISTINGS. The service level of each listing filed with the PPMLS shall be indicated on the	Member Roster Input Worksheets Change & Correction Form Realist Sq Ft Help Training/Online Classes IDX Guidelines IDX Technology Partners Rules & Regulations Assistant Access Form PPMLS Fees & Fines CSCP Rules & Regulations Logins & Passwords Lockbox Transfer Form

On RSC Links, click on #32e. 32f and 32g provide additional information on the ID software.



If you use a Mac computer, the following information does not pertain to you.

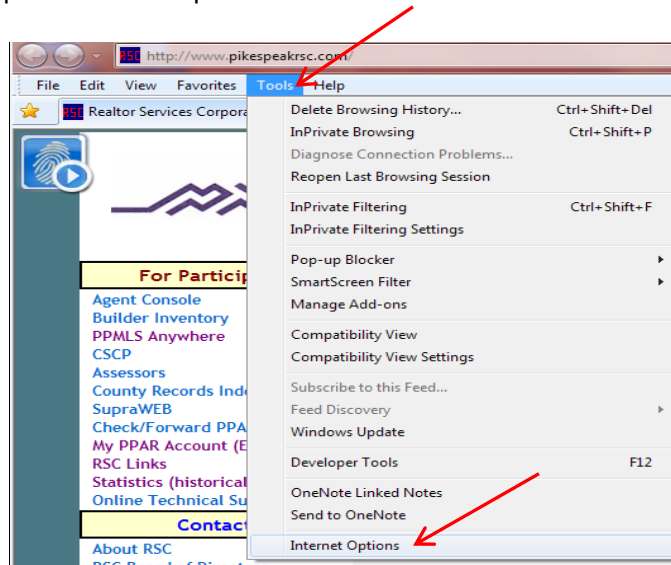
Pop-Up Blockers

The first thing you need to do is either turn off pop-up blockers or allow pop-ups from Tempo in each program installed on your computer that manages pop-ups. Some of these types of programs are:

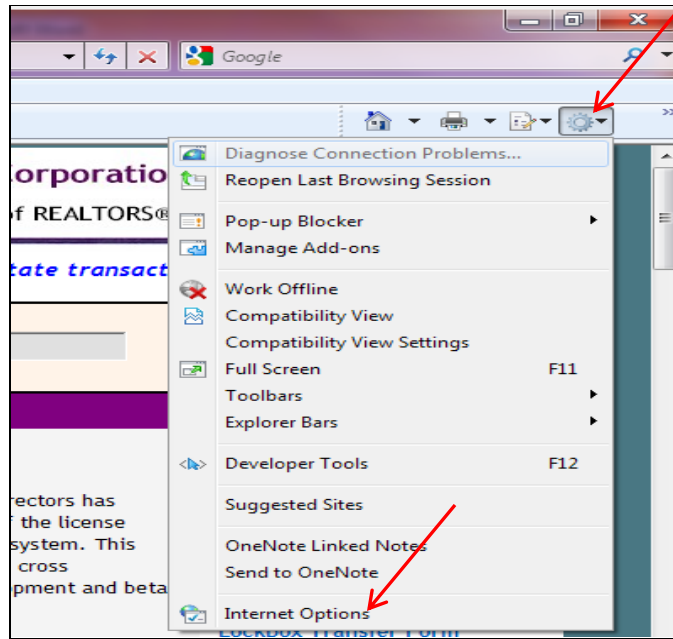
- Internet Explorer
- Toolbars such as Google or Yahoo
- Anti-virus programs
- Specialty Pop-Up Blocker software

Just as in our current MLS, the only browser than can be used in Tempo5 is Microsoft Internet Explorer. To access the settings necessary for Tempo5, open Internet Explorer. The following instructions are for versions 7 and 8 of Internet Explorer.

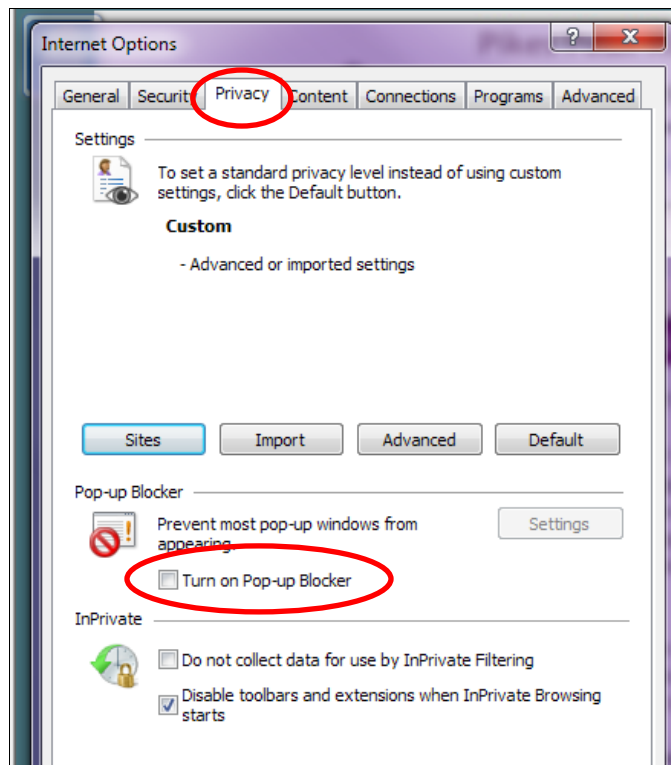
If you have the menu options on the top left of the screen click on Tools. Then on Internet Options.



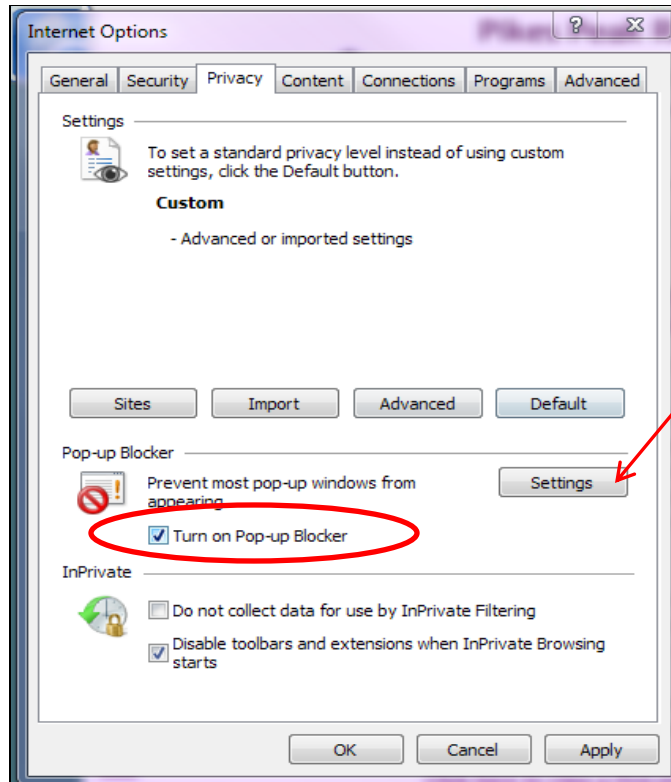
If you don't have the menu options, click on the Tools icon on the top right of the screen. Then on Internet Options.



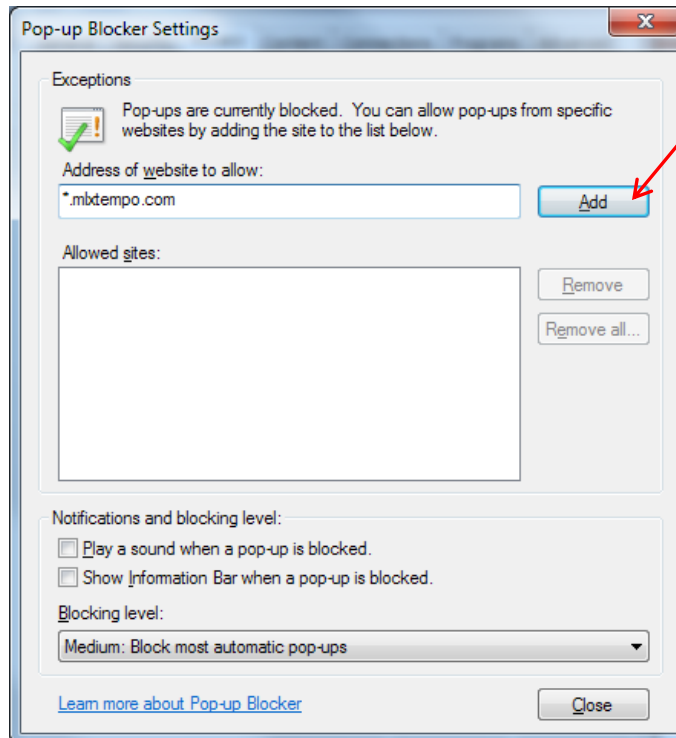
On the Internet Options screen, click on the Privacy Tab. If you want to turn off the pop-up blocker, make sure there is not a checkmark by “Turn on Pop-up Blocker”.



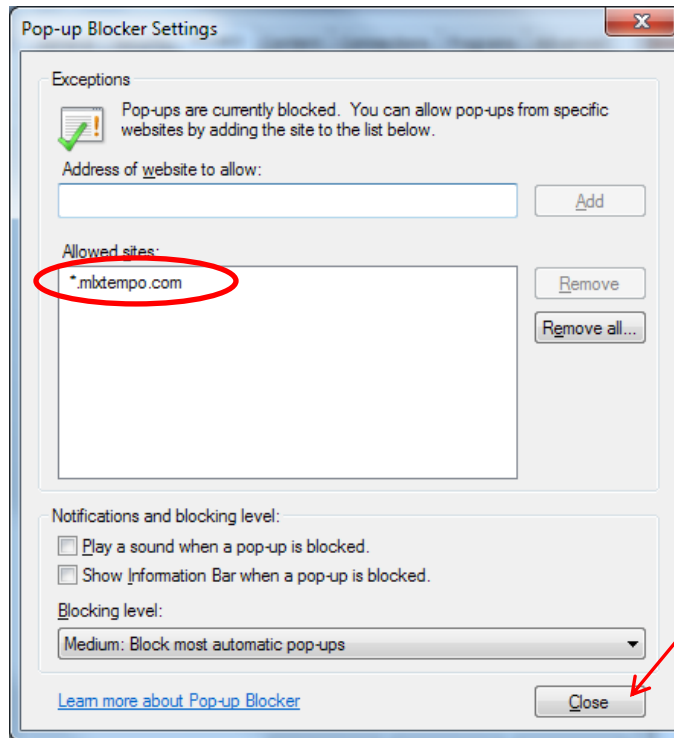
If you want to leave the pop-up blocker on, you must allow pop-ups from mlxtempo.com. To do this, with the checkmark in the box to Turn on Pop-up Blocker, click on the Settings button.



In the Address of website to allow: box, type in ***.mlxtempo.com**. Click on Add.



The web address is now in the Allowed sites box.



Click on the Close button but leave the Internet Options screen open.

For each software program installed on the computer that controls Pop-ups , find the settings in that program for pop-ups and either turn them off or allow pop-ups on the mlxtempo.com website.

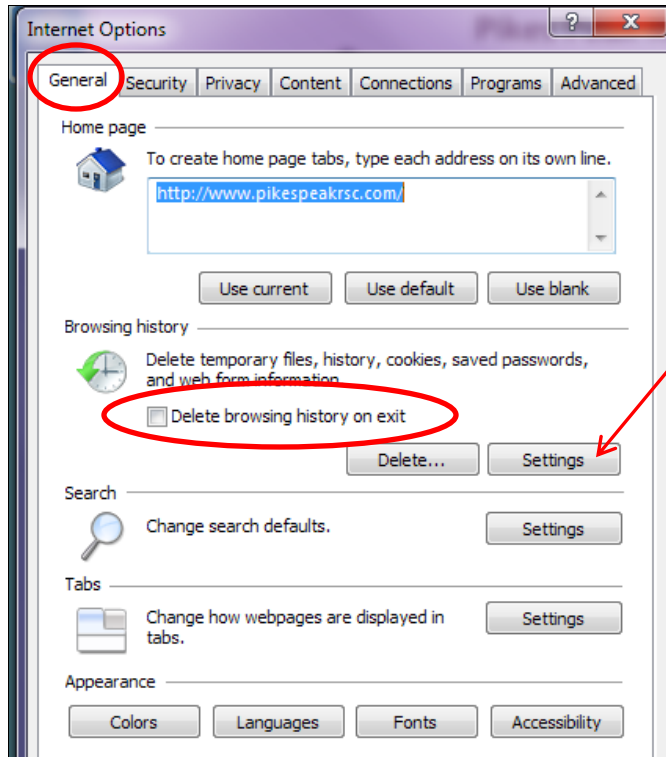
In Internet Explorer there are several settings to configure so Tempo5 runs most efficiently and as quickly as possible.

To enhance performance Tempo5 uses a technology called Smart Cache. This means that the first time you go to a screen Internet Explorer must build that page to display it. It then stores the page in memory and a record of it in the browsing history. The next time you go to that same page, the screen should appear almost instantaneously as it pulls it out of memory rather than building it again. If you delete the browsing history and clear the memory of that page, then each time you go to the page it will take time to build it.

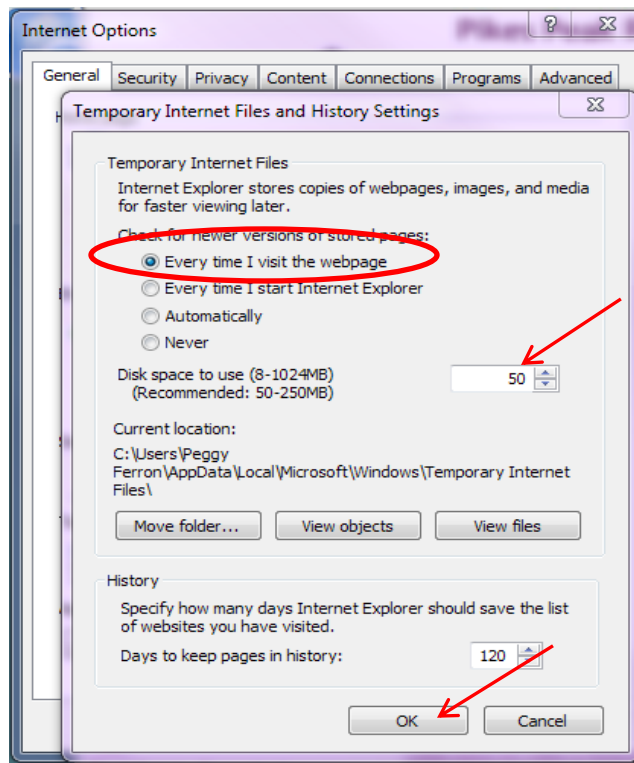
The following settings will ensure that the pages load quickly each time you return to a page.

If you are using Internet Explorer version 8, on the General Tab in the Browsing history section, make sure there is not a checkmark in the box by Delete browsing history on exit.

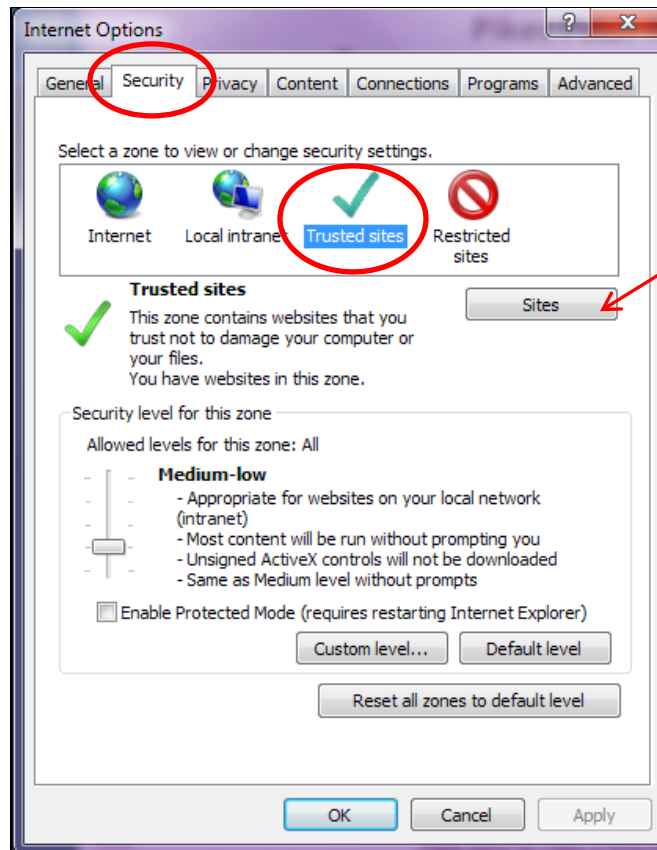
For Internet Explorer versions 7 and 8, on the General tab in the Browsing History section click on the Settings button.



On the settings screen, make sure that the option “Every time I visit the webpage” is selected. In the box for Disk space to use, type a number between 50-250. This number reserves that portion of the hard drive to store temporary files and browsing history. Click OK at the bottom of the page.



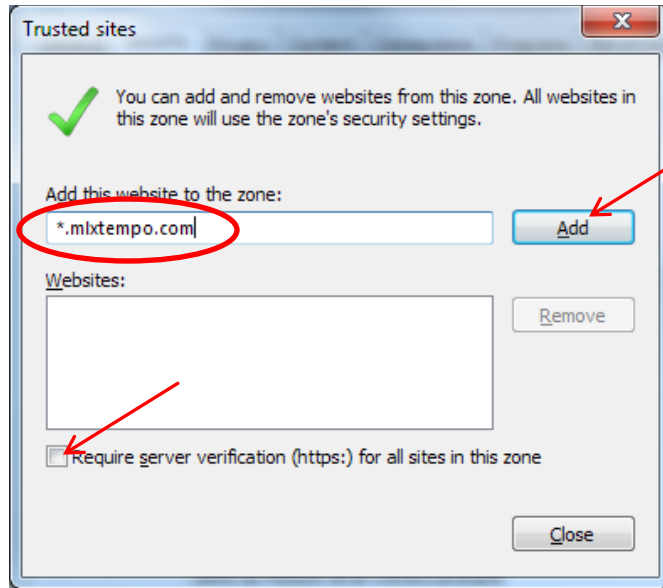
In order for many of the functions in Tempo5 to work correctly, the mlxtempo.com website must be added as a Trusted Site. To do this, click on the Security Tab. Click on the Trusted Sites icon. With Trusted sites showing below the box, click on the Sites button.



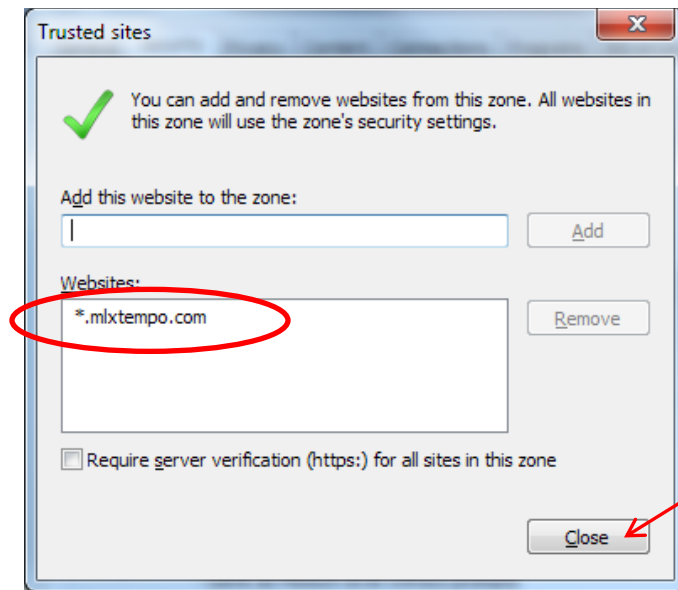
In the box for "Add this website to the zone:" type in ***.mlxtempo.com**.

At the bottom of the screen make sure there is not a checkmark in the box for "Require server verification ..."

Click on the Add button.

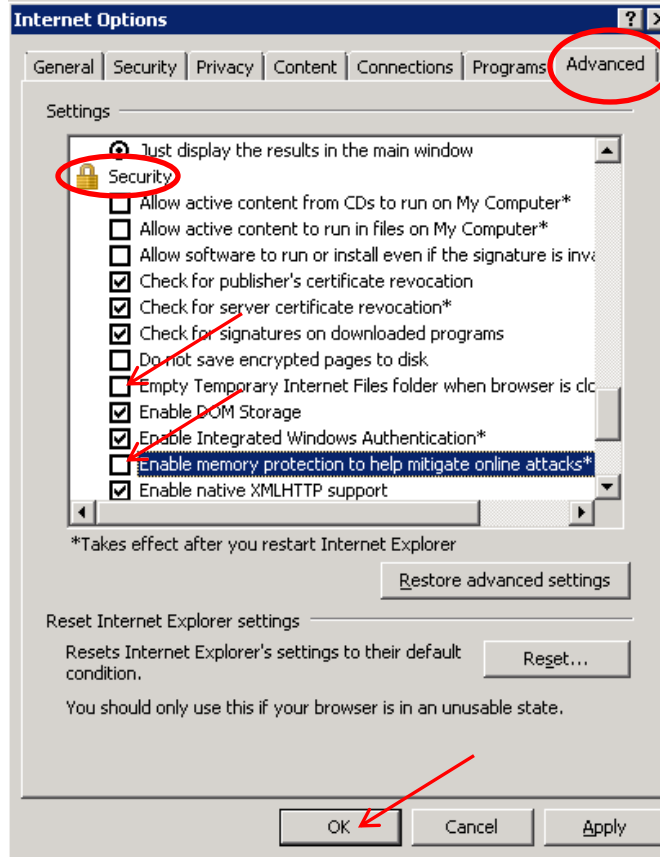


The website address now shows in the Websites box. Click on the Close button.



Next, click on the Advanced tab at the top of the Internet Options screen. Scroll down this screen until you see the section for Security.

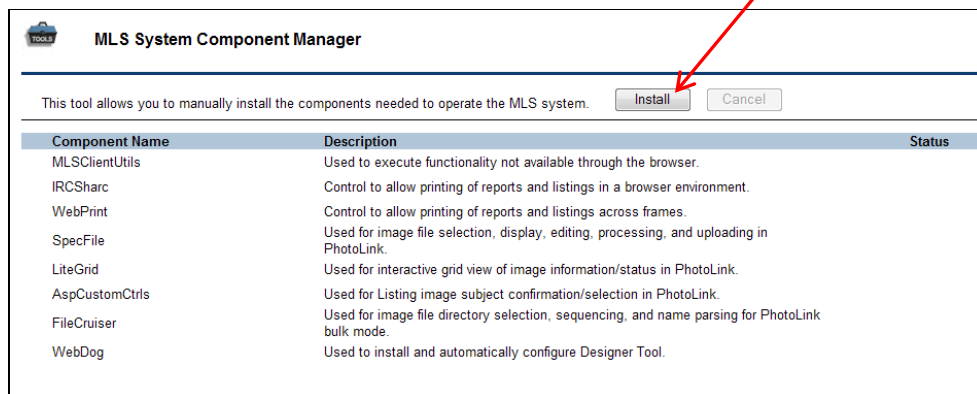
Uncheck the box for “Empty Temporary Internet Files folder when browser is closed”. Just a few lines down is the option “Enable Memory Protection to help mitigate online attacks”. Uncheck this box. This is temporary and we’ll go back at the end and check that last box again to provide added security for your computer. Click OK on the bottom of the screen. This closes the Internet Options screen and all changes made are saved.



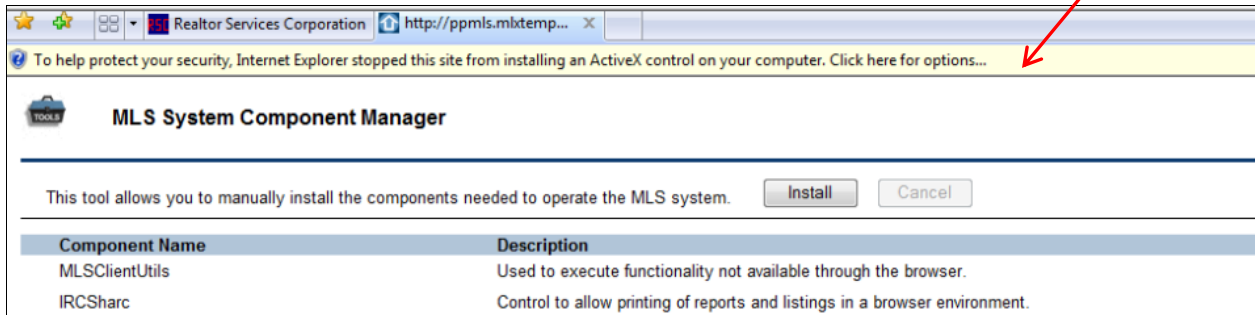
ActiveX Controls

On a PC, Tempo5 requires several small Active X files to work efficiently. If these files are not installed, some functions within Tempo5 will not work at all or will not work correctly. These files can be installed from the website <http://ppmls.mlxtempo.com/ax>.

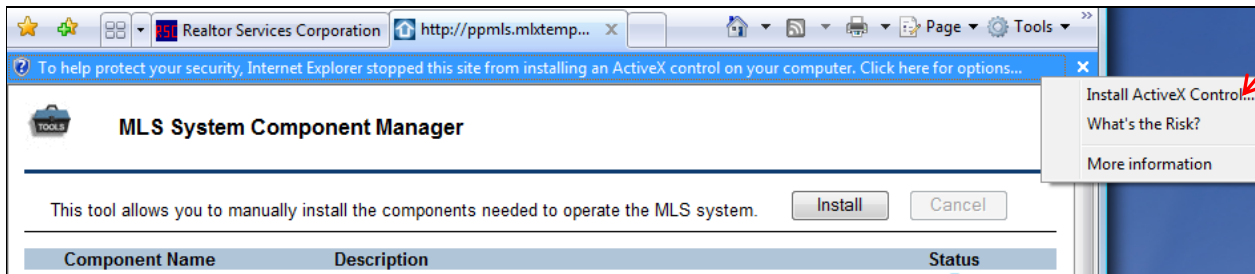
On the MLS System Component Manager page a List of the Active X files, or Active X controls, needed for Tempo5 are listed. At the top of the screen, click on the Install button.



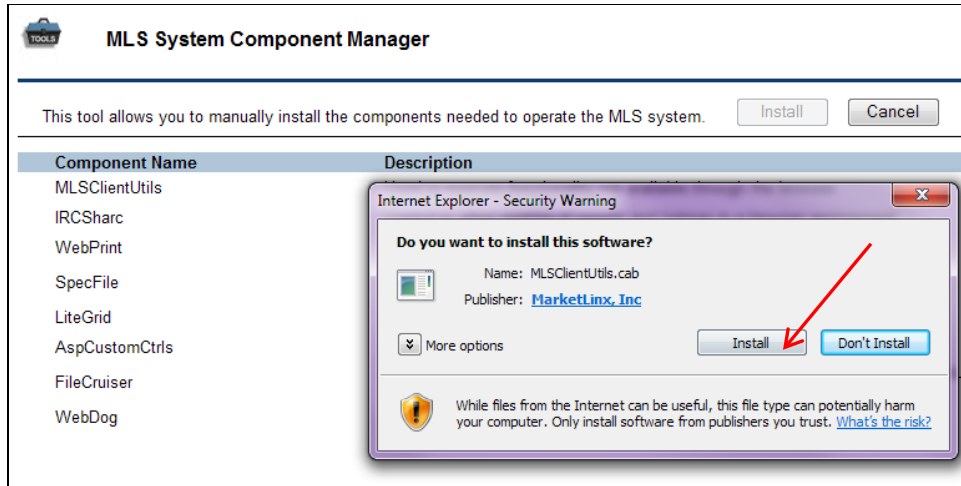
If a light yellow bar appears near the top of the screen indicating that Internet Explorer has stopped this site from installing an ActiveX control, click on that bar.



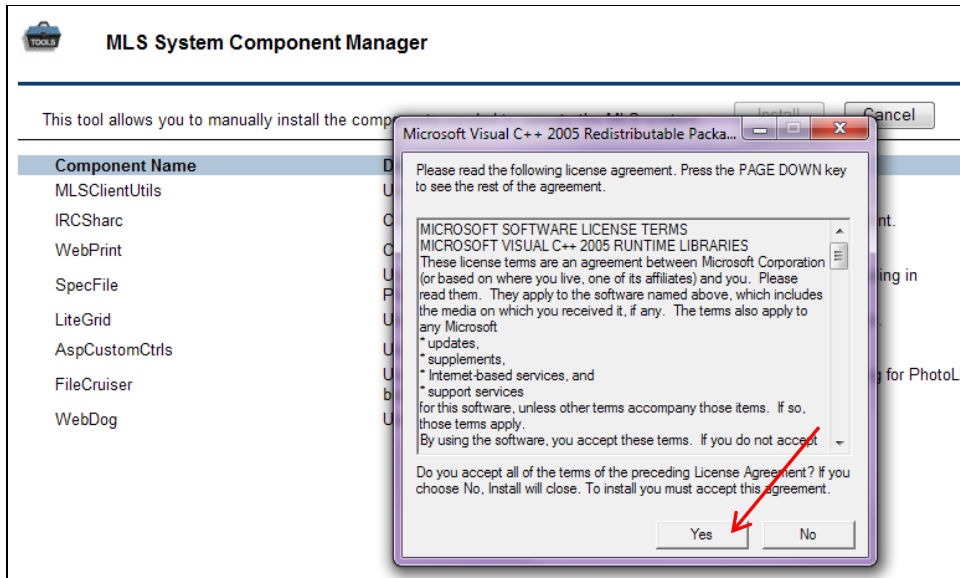
When you click on the bar, it turns blue and a menu appears. On that menu click on Install ActiveX Control.



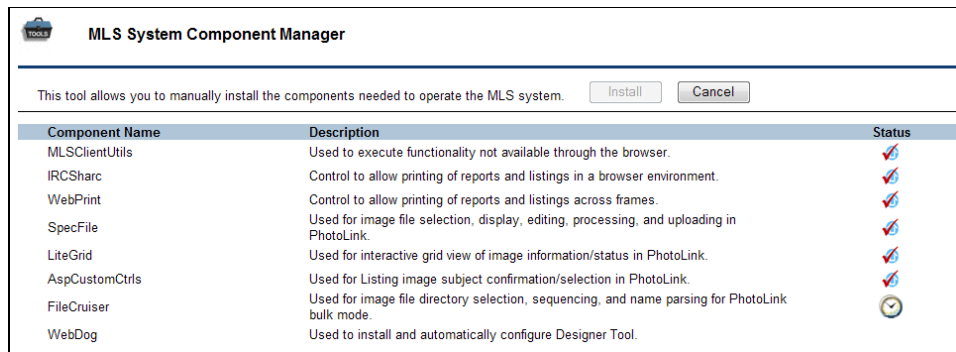
If a screen appears asking if you want to install this software, click on the Install button. Do this for each screen that may appear.



You may be prompted to accept a licensing agreement. If this screen appears, read it, then click on Yes.

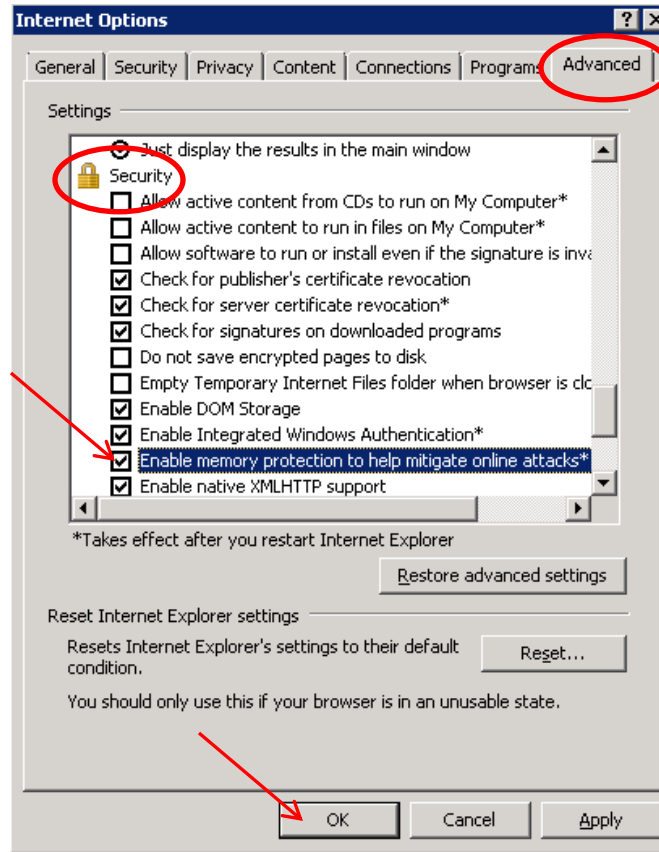


As each ActiveX control is installing you will see a clock icon. When installation of that ActiveX control is complete you see a red checkmark.



When all files are installed and marked with red checkmarks, you can close the screen. You will only need to install these Active X controls once on each computer used to access PPMLS.

The last step is to go back and check the option in Internet Explorer that we previously unchecked to eliminate problems installing the ActiveX files. Click on either the Tools Menu or the Tools icon in Internet Explorer and click on Internet Options. Click on the Advanced Tab. Scroll down to the Security section. Find the option "Enable memory protection to help mitigate online attacks". Click in the checkbox so that it is once again selected. Click OK.



If you have questions, please call RSC at 719 635-5040, Monday-Friday, 8am-5pm.